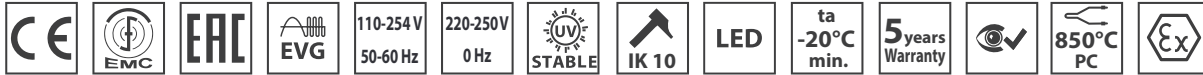


AQUA-70-Ex-PRO

IP 66 / IP 68 / zone 1/21



FTZÚ 17 ATEX 0052X



Application: Dustproof and water-tight lighting fixture AQUA-70-Ex-PRO is designed for lighting of areas with danger of explosion. The lighting fixture is certified by FTZU Ostrava-Radvanice (certificate type FTZU 17 ATEX 0052X).

Ballast: EP – electronic 110-254 V, 50-60 Hz AC, 220-250 V, 0 Hz DC

Light source: LED, 4000K, CRI +80

Housing: Tube with outer diameter of 70 mm and wall thickness of 4 mm made from clear PC - IK10 (polycarbonate)

Fastening: Surface wall or ceiling mounting by means of plastic or stainless steel mounting brackets (not standard equipment) or suspension by means of cable suspenders

Standard equipment: 1pc EX plastic cable gland M20x1,5 for diameter of cable 7-13mm, 1pc EX plastic sealing plug

Calculated lifetime – LED modules:

L80B50 ta50 – 45 000h

AQUA-70-Ex-PRO-D

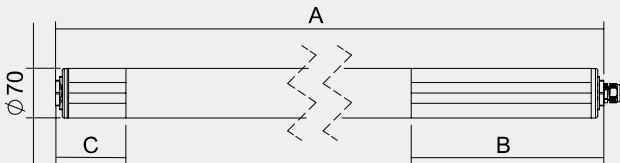
II 2G Ex db eb mb op is IIC T4 Gb

II 2D Ex tb op is IIIC T62°C Db

AQUA-70-Ex-PRO-WOD

II 2G Ex eb mb op is IIC T4 Gb

II 2D Ex tb op is IIIC T62°C Db

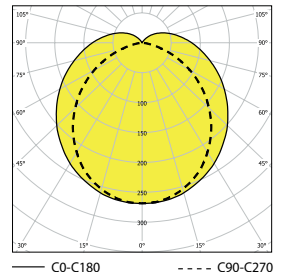


Order number	Name	Lighting fixture luminous flux (lm)	Power input (W)	Rated power output	Ta max (°C)	Equivalent*	Dimensions of lighting fixture A x B x C (mm)	Weight (kg)
AL084240	AQUA-70-Ex-PRO-D-2750-118-4K	2107	16	132	50	X	1149x425x65	2,9
AL084200	AQUA-70-Ex-PRO-D-4000-118-4K	3061	28	109	50	1x36W	1149x425x65	2,9
AL084241	AQUA-70-Ex-PRO-D-5500-136-4K	4175	30	139	50	1x58W	1709x425x65	4,7
AL084201	AQUA-70-Ex-PRO-D-8000-136-4K	5985	51	117	50	X	1709x425x65	4,7
AL084242	AQUA-70-Ex-PRO-WOD-2750-118-4K	2107	16	132	50	X	1149x425x65	2,9
AL084202	AQUA-70-Ex-PRO-WOD-4000-118-4K	3061	28	109	50	1x36W	1149x425x65	2,9
AL084243	AQUA-70-Ex-PRO-WOD-5500-136-4K	4175	30	139	50	1x58W	1709x425x65	4,7
AL084203	AQUA-70-Ex-PRO-WOD-8000-136-4K	5985	51	117	50	X	1709x425x65	4,7

Tolerance of luminous flux and power input of the lighting fixture +/- 10%

* Luminaires are not a direct replacement. They may vary in length. The required lighting of the room must be verified by calculation.

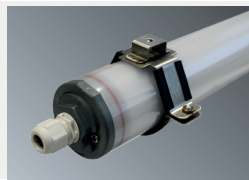
AQUA-70-Ex-PRO



Accessories on request



AL008096	Plastic cable gland Ex M20x1.5
AL008097	Plastic nut WISKA EMUG 20 M20x1.5
AL008090	Sealing plug Ex M20x1.5
AL007047N	Flat sealing ring EPDM 26x20x1.5 mm



Direct mounting

AL064898	Stainless steel mounting bracket AQUA-70 (1 pc) for direct surface mounting
----------	---



Direct mounting

AL053627	Stainless steel mounting bracket AQUA-70 (1 pc)
----------	---



Direct mounting

AL053629	Mounting PC bracket AQUA-70, dark grey (1pc)
----------	--

Suspended mounting

AL051127	Cable suspension AQUA-70 (2 pcs)
AL053629	Mounting PC bracket AQUA-70, dark grey (1pc)



Direct mounting

AL053628	Stainless steel mounting bracket AQUA-70 (1 pc)
----------	---

Suspended mounting

AL051134	Cable suspension AQUA-70 (2 pcs) stainless steel
AL053628	Stainless steel mounting bracket AQUA-70 (1 pc)



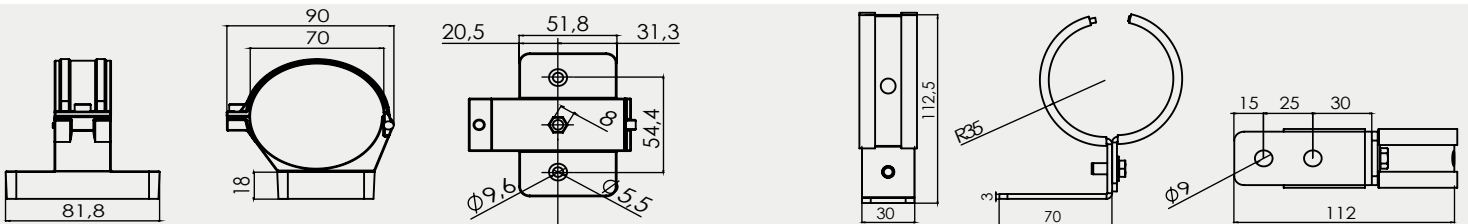
Direct mounting

AL053630	Mounting PC bracket AQUA-70, bright grey (1pc)
----------	--

Suspended mounting

AL051127	Cable suspension AQUA-70 (2 pcs)
AL053630	Mounting PC bracket AQUA-70, bright grey (1pc)

Lighting fixture detail



Marking system and overview of approved variants of lighting fixtures

AQUA-70-Ex-PRO-D-XXXX-YYY	lighting fixture type for standard operation with disconnector
AQUA-70-Ex-PRO-WOD-XXXX-YYY	lighting fixture type for standard operation without disconnector
XXXX*	indicates value of luminous flux (lumen) 4000/8000
YYY*	indicates type of lighting fixture housing 118/136

On request

3000/4000/6000K- colour temperature

1/3 F - single-phase or three phase through wiring connection, max. diameter of wires 4 mm²

Standard order number	EM-1H	EM-3H	MULTI-1H	MULTI-3H	DALI	1F	3F
AL084240	X	X	X	X	X	AL084240 1F	AL084240 3F
AL084200	X	X	X	X	X	AL084200 1F	X
AL084241	X	X	X	X	X	AL084241 1F	AL084241 3F
AL084201	X	X	X	X	X	AL084201 1F	X
AL084242	X	X	X	X	X	AL084242 1F	AL084242 3F
AL084202	X	X	X	X	X	AL084202 1F	X
AL084243	X	X	X	X	X	AL084243 1F	AL084243 3F
AL084203	X	X	X	X	X	AL084203 1F	X

Use of lighting fixtures in areas with danger of explosion	Marking of external influences	Area classification	
		Marking	Directive
Danger of explosion of flammable dust	BE3N1	ZONE 21.22	ČSN EN 60079-14, ČSN EN 60079-10-2
Danger of explosion of flammable gases and vapours	BE3N2	ZONE 1.2	ČSN EN 60079-14, ČSN EN 60079-10-1