

BOXER-PRO

IP 65



IK10 + 40J



IK11 + 55J
variante FC



Application: Antivandal lighting fixture BOXER-PRO with dust and splash water resistance is designed for areas with high risk of damage, i.e. prison cells, psychiatric hospitals, gyms and pedestrian subways.

Ballast: EP – electronic 220-240 V/50-60 Hz AC, 220-240 V

Light source: LED, 4000K, CRI +80, MacAdam3

Housing: White painted steel sheet RAL 9016

Diffuser: Polycarbonate in combination with painted steel frame RAL9016

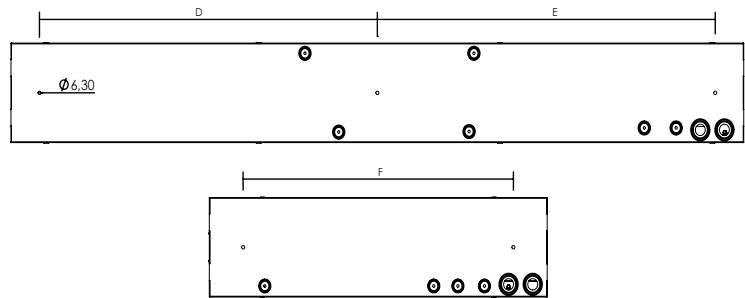
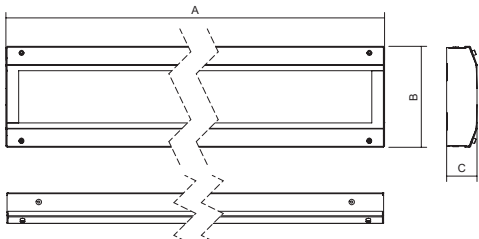
Reflector: Highly polished aluminium sheet

Fastening: Surface wall or ceiling mounting, recessed via frame for recessed installation or corner mounted via set for corner installation

Connection: Screwless three-pole terminal block, maximum diameter of wires 2.5 mm². The lighting fixture is prepared for loop-in (possibility of connection of two cables)

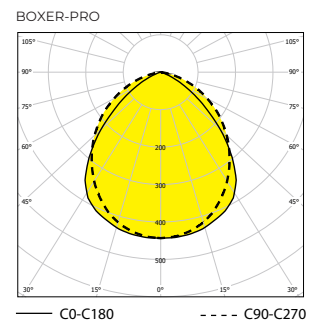
Standard equipment: 2 pcs cable gland, washers with rubber to seal mounting holes, safety screws (it is necessary to order additionally 004778 - Bit for safety screw with socket head and pin s=3)

Calculated lifetime – LED modules: L80B10 ta30 – 70 000h
L70B10 ta30 – 100 000h



Order number	Name	Lighting fixture luminous flux (lm)	Power input (W)	Rated power output (lm/W)	Ta max (°C)	Dimensions of lighting fixture A x B x C (mm)	Mounting spacing Dx E/F (mm)	Weight (kg)
AL053495	BOXER-PRO-1450-4K	1123	8	140	55	421x184x56	320	2,8
AL053489	BOXER-PRO-1650-4K	1413	11	128	55	421x184x56	320	2,8
AL053494	BOXER-PRO-2900-4K	2393	18	133	60	701x184x56	540	4,7
AL053491	BOXER-PRO-3300-4K	2826	22	128	60	701x184x56	540	4,7
AL053497	BOXER-PRO-5800-4K	4786	36	133	55	1257x184x56	550x550	7
AL053487	BOXER-PRO-6600-4K	5368	41	131	55	1257x184x56	550x550	7
AL053499	BOXER-PRO-7200-4K	6350	48	132	45	1519x184x56	680x680	9
AL053485	BOXER-PRO-8200-4K	6710	51	132	45	1519x184x56	680x680	9

Tolerance of luminous flux and power input of the lighting fixture +/- 10%



Order number	Name	Lighting fixture luminous flux (lm)	Power input (W)	Rated power output (lm/W)	Ta max (°C)	Dimensions of lighting fixture A x B x C (mm)	Mounting spacing Dx E/F (mm)	Weight (kg)
AL053495 FC	BOXER-PRO-FC-1450-4K	1123	8	140	55	426x186x56	320	3
AL053489 FC	BOXER-PRO-FC-1650-4K	1413	11	128	55	426x186x56	320	3
AL053494 FC	BOXER-PRO-FC-2900-4K	2393	18	133	60	706x186x56	540	5
AL053491 FC	BOXER-PRO-FC-3300-4K	2826	22	128	60	706x186x56	540	5
AL053497 FC	BOXER-PRO-FC-5800-4K	4786	36	133	55	1262x186x56	550x550	7,3
AL053487 FC	BOXER-PRO-FC-6600-4K	5368	41	131	55	1262x186x56	550x550	7,3
AL053499 FC	BOXER-PRO-FC-7200-4K	6350	48	132	45	1524x186x56	680x680	9,5
AL053485 FC	BOXER-PRO-FC-8200-4K	6710	51	132	45	1524x186x56	680x680	9,5

FC (full cover)

ALUMA antivandal luminaires with FC marking comply with ANTI LIGATURE or SUICIDE RESISTANT requirements for areas with high risk of damage like prison or a secure healthcare facility. There are generally no moving or protruding parts or rounded, bevelled corners also prevent points, where something can be attached. This means there are no ligature points or attachment areas that could enable a luminaire to be used for self-harming.



BOXER-PRO-FC

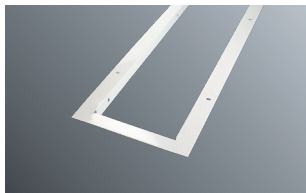
The luminaire of this type is equipped with a frame that completely covers the luminaire body. The impact resistance of this solution is 55J.



BOXER-PRO

The luminaire of this type is equipped with a frame that covers the luminaire body by 10 mm. The impact resistance of this solution is 40J.

Accessories on request



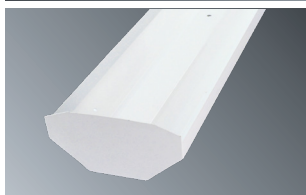
AL053412 Recessed frame BOXER-PRO 421

AL053413 Recessed frame BOXER-PRO 701

AL053414 Recessed frame BOXER-PRO 1257

AL053415 Recessed frame BOXER-PRO 1519

The requirement to equip the luminaire with a recessed frame must be specified when ordering, or contact technical support. BOXER-PRO-FC version cannot be equipped with a recessed frame.



AL053416 Set for corner installation BOXER-PRO 421

AL053417 Set for corner installation BOXER-PRO 701

AL053418 Set for corner installation BOXER-PRO 1257

AL053419 Set for corner installation BOXER-PRO 1519

BOXER-PRO-FC version cannot be equipped with a corner mounting kit.

On request

DIM – dimmable electronic ballast (DSI, DALI)

2.7K-6.5K – colour temperature

RAL – other colour scale

NIGHT LIGHT - equipped with 4-8W LED source for night-time lighting

NEREZ - housing produced from stainless steel AISI 304 or AISI 316

(in case of STAINLESS STEEL version its declared for ambient temperature decreased about 5-10°C)

MULTI - 1/3 – maintained emergency lighting is always on (standard luminaire with emergency lighting module)

Em - 1/3 - non-maintained emergency lighting (usually only comes on for a specific duration when the power supply to normal artificial lighting fails)

SKLO – hardened safety glass

II - insulation class II

MW SENSOR - microwave sensor (in case of requirement for sensor, contact the technical support)

Standard order number	MULTI-1,5H	MULTI-3H	DALI	1F	3F
AL053495	AL053495 1H	AL053495 3H	AL053495 DALI	X	X
AL053489	AL053489 1H	AL053489 3H	AL053489 DALI	X	X
AL053494	AL053494 1H	AL053494 3H	AL053494 DALI	X	X
AL053491	AL053491 1H	AL053491 3H	AL053491 DALI	X	X
AL053497	AL053497 1H	AL053497 3H	AL053497 DALI	X	X
AL053487	AL053487 1H	AL053487 3H	AL053487 DALI	X	X
AL053499	AL053499 1H	AL053499 3H	AL053499 DALI	X	X
AL053485	AL053485 1H	AL053485 3H	AL053485 DALI	X	X

Standard order number	MULTI-1,5H	MULTI-3H	DALI	1F	3F
AL053495 FC	AL053495 FC 1H	AL053495 FC 3H	AL053495 FC DALI	X	X
AL053489 FC	AL053489 FC 1H	AL053489 FC 3H	AL053489 FC DALI	X	X
AL053494 FC	AL053494 FC 1H	AL053494 FC 3H	AL053494 FC DALI	X	X
AL053491 FC	AL053491 FC 1H	AL053491 FC 3H	AL053491 FC DALI	X	X
AL053497 FC	AL053497 FC 1H	AL053497 FC 3H	AL053497 FC DALI	X	X
AL053487 FC	AL053487 FC 1H	AL053487 FC 3H	AL053487 FC DALI	X	X
AL053499 FC	AL053499 FC 1H	AL053499 FC 3H	AL053499 FC DALI	X	X
AL053485 FC	AL053485 FC 1H	AL053485 FC 3H	AL053485 FC DALI	X	X