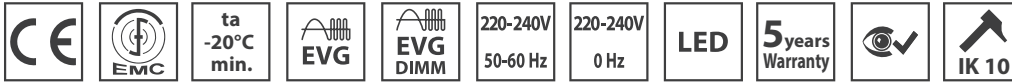
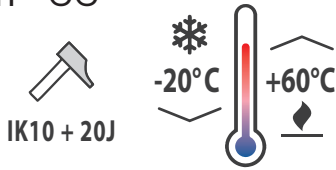


PITBUL-PRO-PLUS

IP 66



Application: Robust metal lighting fixture PITBUL-PRO with high degree of protection is designed for areas, such as heavy industry, areas with occurrence of aggressive substances (e.g. oils, greases) and other manufacturing areas.

Ballast: EP – electronic 220-240 V/50-60 Hz AC, 220-240 V DC

Light source: LED, 4000K, CRI +80, MacAdam3

Housing: White painted steel sheet RAL 9016

Diffuser: CG – clear hardened safety glass
OPG – matt hardened safety glass

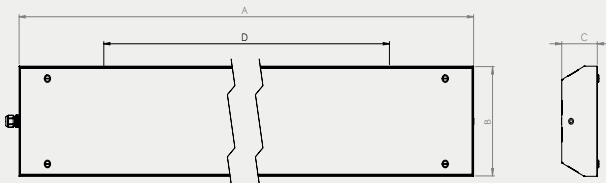
Reflector: White painted steel sheet RAL 9016

Fastening: Direct surface mounting by means of M8 screws, suspension via suspending brackets.

Connection: Screwless three-pole terminal block, maximum diameter of wires 2.5 mm²

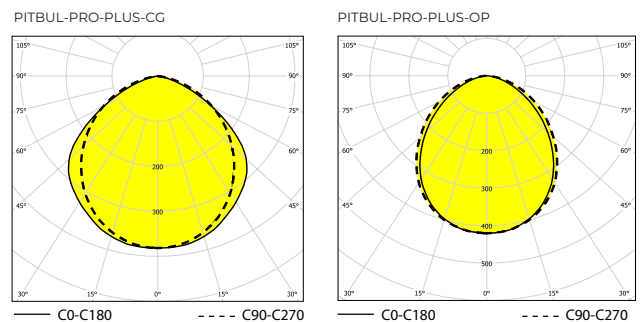
Standard equipment: Cable gland Pg13,5 for diameter of cable 7-12 mm and sealing plug.

Calculated lifetime – LED modules: L80B10 ta35 – 70 000h, L70B10 ta35 – 100 000h



Order number	Name	Lighting fixture luminous lux (lm)	Power input (W)	Rated power output (lm/W)	Ta max (°C)	Dimensions of lighting fixture A x B x C (mm)	Mounting spacing D (mm)	Weight (kg)
AL051895	PITBUL-PRO-PLUS-CG-4400-4K	4034	26	155	60	1250x245x100	800	11,5
AL051896	PITBUL-PRO-PLUS-OPG-4400-4K	4090	26	157	60	1250x245x100	800	11,5
AL051897	PITBUL-PRO-PLUS-CG-10000-4K	9414	65	145	60	1250x245x100	800	11,5
AL051898	PITBUL-PRO-PLUS-OPG-10000-4K	9545	65	147	60	1250x245x100	800	11,5

Tolerance of luminous flux and power input of the lighting fixture +/- 10%



Accessories on request



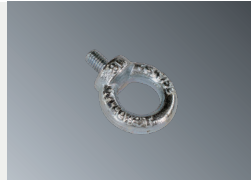
Direct mounting

AL054935 Set of stainless steel ceiling brackets
PITBUL (2 pcs)



Suspended mounting

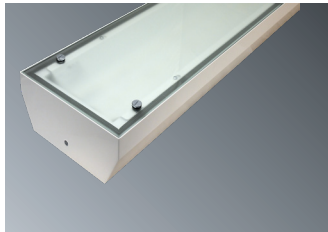
AL051146 Pole bracket PITBUL (for Ø 50 mm)



Suspended mounting

AL004642 Suspension bracket DIN 580 M8 PITBUL - 1 pc

Lighting fixture detail



PITBUL-PRO-PLUS-OPG



PITBUL-PRO-PLUS-CG