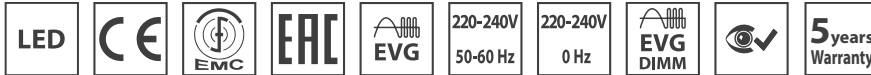
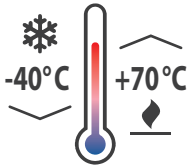


# SALUKA-PRO-PLUS/FROST

IP 66



**Application:** Metal dustproof lighting fixture SALUKA-PRO-PLUS/FROST with splash water resistance designed for workshops, garages, industrial and production areas with higher ambient temperature, or warehouses and freezers with low temperature.

**Ballast:** EP – electronic 220-240 V/50-60 Hz AC, 220-240 V DC

**Light source:** LED, 4000K, CRI +80, MacAdam3

**Housing:** White painted steel sheet RAL 9016

**Diffuser:** Clear hardened safety glass  
OP - matt hardened safety glass

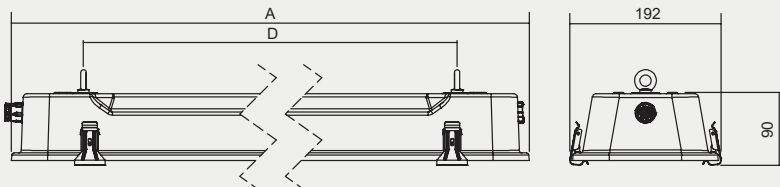
**Reflector:** White painted steel sheet RAL 9016

**Fastening:** Direct surface wall or ceiling mounting, ceiling mounting by means of ceiling brackets or adjustable brackets, wall mounting by means of wall arm brackets, pole mounting by means of pole brackets, suspension via set of suspension hooks (standard equipment)

**Connection:** Screwless three-pole terminal block, maximum diameter of wires 2.5 mm<sup>2</sup>

**Standard equipment:** 1 pc M20 cable gland for diameter of cable 7-12 mm, 1 pc M20 sealing plug, 2 pcs suspending hook, 2 pcs rubber gasket

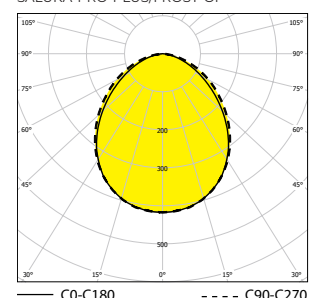
**Calculated lifetime – LED modules:** L80B10 Ta40 – 75 000h  
L70B10 Ta40 – 110 000h



Order number	Name	Lighting fixture luminous flux (lm)	Power input (W)	Rated power output (lm/W)	Ta max (°C)	Dimensions of lighting fixture A x B x C (mm)	Mounting spacing D (mm)	Weight (kg)
<b>variant PLUS</b>								
AL053019	SALUKA-PRO-PLUS-OP-2500-118-4K	2245	17	132	65	705x192x90	510	3,8
AL053020	SALUKA-PRO-PLUS-OP-5000-218-4K	4223	33	128	60	705x192x90	510	3,9
AL053021	SALUKA-PRO-PLUS-OP-2500-136-4K	2245	17	132	65	1305x192x90	1110	7,1
AL053022	SALUKA-PRO-PLUS-OP-5000-236-4K	4223	33	128	60	1305x192x90	1110	7
AL053023	SALUKA-PRO-PLUS-OP-3500-158-4K	3140	25	126	60	1605x192x90	1410	8,1
AL053024	SALUKA-PRO-PLUS-OP-7500-258-4K	6625	47	141	65	1605x192x90	1410	8,3
AL053025	SALUKA-PRO-PLUS-OP-9600-258-4K	7876	57	138	65	1605x192x90	1410	8,3
AL053017	SALUKA-PRO-PLUS70-OP-5000-236-4K	4270	28	153	70	1305x192x90	1110	7
AL053018	SALUKA-PRO-PLUS70-OP-7500-258-4K	6669	43	155	70	1605x192x90	1410	8,3
<b>variant FROST</b>								
AL054492	SALUKA-PRO-FROST-OP-5000-136-4K	4382	28	157	-40	1305x192x90	1110	7,1
AL054493	SALUKA-PRO-FROST-OP-10000-236-4K	8245	56	147	-40	1305x192x90	1110	7
AL054494	SALUKA-PRO-FROST-OP-4750-158-4K	4255	26	164	-40	1605x192x90	1410	8,1
AL054495	SALUKA-PRO-FROST-OP-7500-258-4K	6830	43	159	-40	1605x192x90	1410	8,3
AL054496	SALUKA-PRO-FROST-OP-12500-258-4K	10348	69	150	-40	1605x192x90	1410	8,3

Tolerance of luminous flux and power input of the lighting fixture +/- 10%

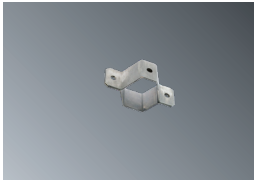
SALUKA-PRO-PLUS/FROST-OP



## Accessories on request



AL051139 Set of ceiling brackets SALUKA (2 pcs)



AL051145 Pole bracket SALUKA stainless steel (for Ø 50 mm)

AL064018 Pole bracket SALUKA stainless steel (for Ø 40 mm)



AL063754 Set of adjustable brackets SALUKA (2 pcs)



AL051147 Stainless steel wall arm bracket SALUKA 60° (1 pc)

## Lighting fixture detail



## On request

**2.7K-6.5K** - colour temperature

**GESIS** – possibility to equip lighting fixtures with connectors

**NEREZ** - housing produced from stainless steel AISI 304 or AISI 316 (in case of STAINLESS STEEL version its declared for ambient temperature decreased about 5-10°C)

**DIM** – dimmable electronic ballast (DALI)

**1/3 F** - single-phase or three phase through wiring connection, maximum diameter of wires 1.5 mm<sup>2</sup>

Standard order number	EM-1H	EM-3H	MULTI-1H	MULTI-3H	DALI	1F	3F
<b>variant PLUS</b>							
AL053019	X	X	X	X	X	AL053019 1F	AL053019 3F
AL053020	X	X	X	X	X	AL053020 1F	AL053020 3F
AL053021	X	X	X	X	X	AL053021 1F	AL053021 3F
AL053022	X	X	X	X	X	AL053022 1F	AL053022 3F
AL053023	X	X	X	X	X	AL053023 1F	AL053023 3F
AL053024	X	X	X	X	X	AL053024 1F	AL053024 3F
AL053025	X	X	X	X	X	AL053025 1F	AL053025 3F
<b>variant FROST</b>							
AL054492	X	X	X	X	X	AL054492 1F	AL054492 3F
AL054493	X	X	X	X	X	AL054493 1F	AL054493 3F
AL054494	X	X	X	X	X	AL054494 1F	AL054494 3F
AL054495	X	X	X	X	X	AL054495 1F	AL054495 3F
AL054496	X	X	X	X	X	AL054496 1F	AL054496 3F