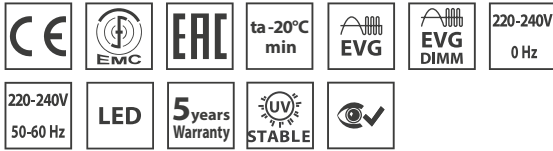


# STAFORD-PRO

IP 65



IK10



**Application:** Recessed antivandal lighting fixture STAFORD-PRO with resistance against dust and with splash water resistance is designed for areas with high risk of damage, such as prison cells, psychiatric hospitals, underpasses, tunnels, underground stations and railway station platforms.

**Ballast:** EP – electronic 220-240 V / 50-60 Hz AC , 220-240V DC 0Hz

**Light source:** LED, 4000K, CRI +80, MacAdam3

**Housing:** White painted steel sheet RAL 9016

**Diffuser:** Combination of painted sheet RAL 9016 and opal polycarbonate diffuser

**Reflector:** White painted steel sheet RAL 9016

**Fastening:** Recessed ceiling mounting

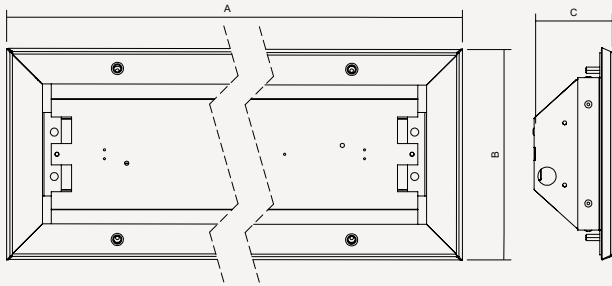
**Connection:** Screwless three-pole terminal block, maximum diameter of wires 2.5 mm<sup>2</sup>

**Standard equipment:** 2 pcs cable gland, washers with rubber to seal mounting holes, safety screws (it is necessary to order additionally 004778 - Bit for safety screw with socket head and pin s=3)

**Calculated lifetime – LED modules:**

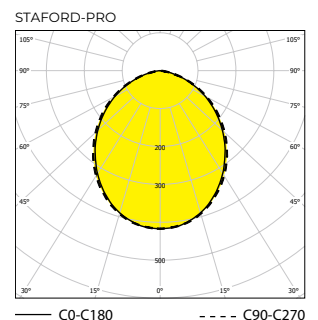
L80B10 ta30 – 70 000h

L70B10 ta30 – 100 000h



Order number	Name	Lighting fixture luminous flux (lm)	Power input (W)	Rated power output (lm/W)	Ta max (°C)	Dimensions of lighting fixture A x B xC (mm)	Mounting hole (mm)	Weight (kg)
AL057690	STAFORD-PRO-OP-3500-4K	2562	21	122	30	653x255x95	605x200	6
AL057691	STAFORD-PRO-OP-4650-4K	3368	29	116	30	653x255x95	605x200	6
AL057692	STAFORD-PRO-OP-5350-4K	3890	34	114	30	653x255x95	605x200	6
AL057693	STAFORD-PRO-OP-7000-4K	5052	43	117	30	953x255x95	905x200	10
AL057694	STAFORD-PRO-OP-8000-4K	5838	51	114	30	953x255x95	905x200	10
AL057695	STAFORD-PRO-OP-9300-4K	6736	58	116	30	1253x255x95	1205x200	14
AL057696	STAFORD-PRO-OP-10650-4K	7781	68	114	30	1253x255x95	1205x200	14

Tolerance of luminous flux and power input of the lighting fixture +/- 10%



## Accessories on request



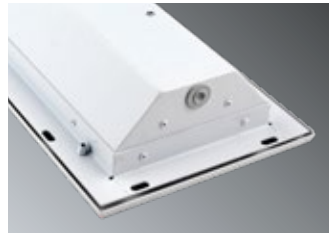
AL002022 STAFORD installation box L=1 253 mm

AL002025 STAFORD installation box L= 953 mm

AL002026 STAFORD installation box L= 653 mm

note: only in case of concrete base / concrete niche

## Lighting fixture detail



## On request

**Em** – non-maintained emergency lighting (1h, 3h)

**DIM** – dimmable electronic ballast (DSI, DALI)

**2.7K-6.5K** – colour temperature

**GLASS** – hardened safety glass

**MW SENSOR** - microwave sensor (in case of requirement for a sensor, contact the technical support)

**MULTI** – maintained emergency lighting (1h, 3h)

**RAL** – other colour scale

**1/3 F** – single-phase or three phase through wiring connection, maximum diameter of wires 2.5 mm<sup>2</sup>

**NEREZ** - housing produced from stainless steel AISI 304 or AISI 316

(in case of STAINLESS STEEL version its declared for ambient temperature decreased about 5-10°C)

**NIGHT LIGHT** - equipped with 4-8W LED source for night-time lighting 3K or 4K

**II** - insulation class II

Stadard order number	EM-1H	EM-3H	MULTI-1H	MULTI-3H	DALI	1F	3F
AL057690	X	X	X	X	AL057690 DALI	X	X
AL057691	X	X	X	X	AL057691 DALI	X	X
AL057692	X	X	X	X	AL057692 DALI	X	X
AL057693	X	X	AL057693 1H	AL057693 3H	AL057693 DALI	X	X
AL057694	X	X	AL057694 1H	AL057694 3H	AL057694 DALI	X	X
AL057695	X	X	AL057695 1H	AL057695 3H	AL057695 DALI	X	X
AL057696	X	X	AL057696 1H	AL057696 3H	AL057696 DALI	X	X