



TEXTEC 500



TEXTEC 750



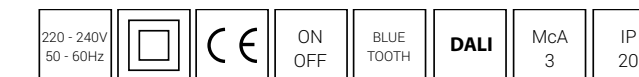
TEXTILE TECH





T E X T E C 5 0 0

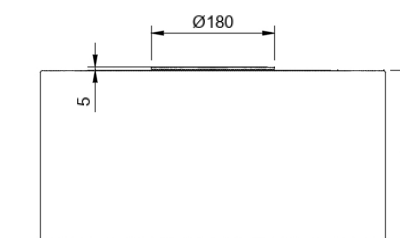
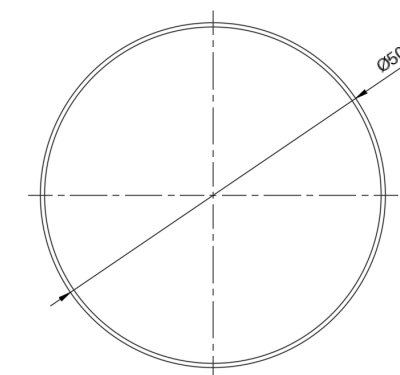
**TEXTEC 500**



COLOR OPTIONS



WHITE CREME BEIGE VARIOUS COLORS



**PRODUCT DATA**

Size : D500 x 250mm  
 Weight : 2,8 kg  
 Materials : Housing : Fabric  
 Optic : Polycarbonate  
 Optic : Diffuse (DIFF) or mic oprisma (MICRO)  
 Light distribution : Direct 75%, indirect 25%  
 Driver : FIX, DALI, Bluetooth (inside the baldachin)  
 Ambient temperature : 0 / + 35 °C  
 Lifetime : L90B10 - 60 000 hours  
 Installation : Suspended  
 Visual comfort : UGR <19  
 Fire retardant : B1

**TECHNICAL SPECIFICATION**

CODE	POWER	CRI	CCT	LUMEN
TEX500	58 W	> 90	3000K	4610 lm
TEX500	58 W	> 90	4000 K	4800 lm
TEX500	58 W	> 90	TW 2700 - 6500K	4610 lm

Order example:

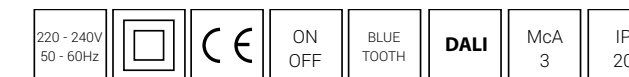
TEX500	-	Power	-	CRI / CCT	-	Beam	-	Color	-	Driver	-	Option
TEX500	-	58	-	930	-	DIFF	-	WHITE	-	FIX	-	XYZ



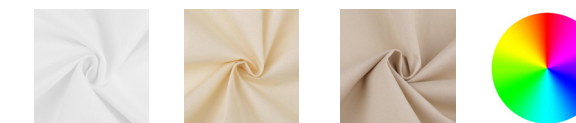


T E X T E C 7 5 0

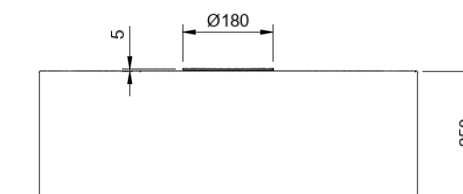
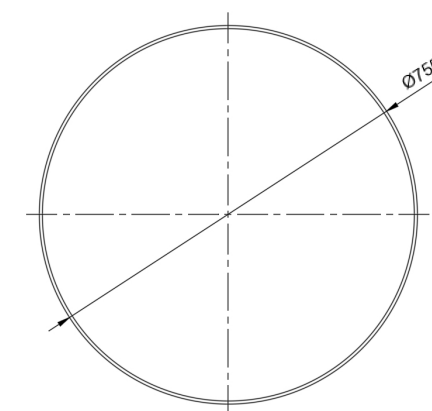
TEXTEC 750



COLOR OPTIONS



WHITE CREME BEIGE VARIOUS COLORS



PRODUCT DATA

Size : D750 x 250mm  
 Weight : 4,1 kg  
 Materials : Housing : Fabric  
 Optic : Polycarbonate  
 Optic : Diffuse (DIFF) or mic oprisma (MICRO)  
 Light distribution : Direct 80 %, indirect 20 %  
 Driver : FIX, DALI, Bluetooth (inside the baldachin)  
 Ambient temperature : 0 / + 35 °C  
 Lifetime : L90B10 - 60 000 hours  
 Installation : Suspended  
 Visual comfort : UGR <19  
 Fire retardant : B1

TECHNICAL SPECIFICATION

CODE	POWER	CRI	CCT	LUMEN
TEX750	85 W	> 90	3000K	6640 lm
TEX750	85 W	> 90	4000 K	6900 lm
TEX750	85 W	> 90	TW 2700 - 6500K	6640 lm

Order example:

TEX750	-	Power	-	CRI / CCT	-	Beam	-	Color	-	Driver	-	Option
TEX750	-	85	-	930	-	DIFF	-	WHITE	-	FIX	-	XYZ